

T e s t R e p o r t

Report No : L10539 B (Amd1)
Client: : Tenmat
Ashburton Road West
Trafford Park, Manchester
M17 1RU
Description : "Bucket" Fire Hood
Manufacturer : Not Disclosed
Type/Model : Firefly 120 loft cover
Lamp Type : 12V - 50W MR16 (G5.3) – Dichroic reflector
Condition on Receipt : Good
Test Specification : Refer to page 3 of this test report
Date Tested : 20/11/09
Conclusion : On the basis of the tests undertaken, the submitted sample is considered to "COMPLY" with the requirements of the above specification
Date Issued : 13/01/10

Signed: G.RICHARDS
Position: Quality Manager



Approved: S.W.POOLE
Position: Laboratory Manager



These Test Results relate only to the unit tested. This Report and following report may not be reproduced except in full without the written approval of the Testing Laboratory.

Registered Office: Stafford Park 7 Telford Shropshire TF3 3BQ England
Tel: +44 (0) 1952 290907 **Fax:** +44 (0) 1952 290908 **Email:** lab@lightingassociation.com **Web:**
www.lightingassociation.com

Registered in England No: 2925465 VAT Reg No GB 927421329 Company Secretary Rosemary Rogers. A Wholly owned subsidiary of The Lighting Association Ltd.

REPORT L10539 B (Amd1)

Note: This amendment recognises minor changes to the wording used within the body of the report.

Introduction

The Lighting Association Laboratories were commissioned to perform a thermal test to the clients own specification with reference to clause 12.4 of BS EN 60598-1:2008 and BS EN 60598-2-2:1997* on the clients fire hood, used in conjunction with a readily available recessed luminaire supplied by the client.



Product details

The product is a fire hood for use in conjunction with recessed luminaires to maintain fire barriers in commercial and domestic premises.

The hood has the following dimensions:-

Height – 155 mm, Thickness – 10 mm,

External diameter at top – 220 mm,

External diameter at base – 270 mm,



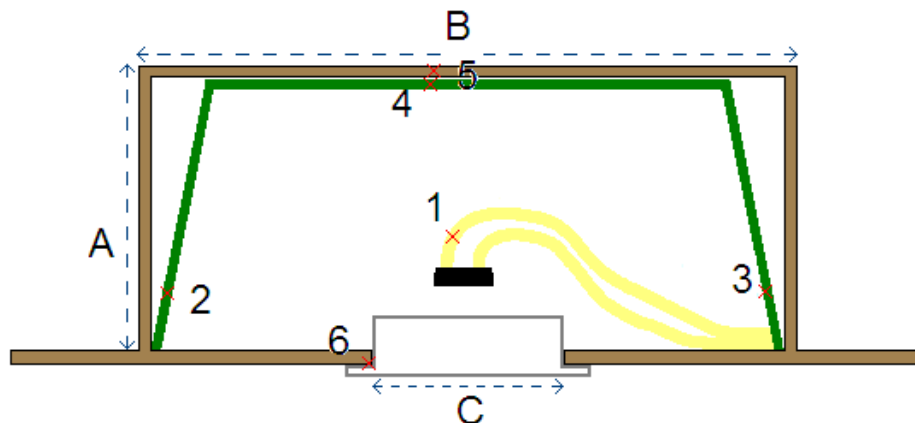
* Please note that the thermal tests of BS EN 60598-1 and BS EN 60598-2-2 are identical to those detailed in the international standards IEC 60598-1 and 60598-2-2 from which AS 60598-1 and AS 60598-2-2 are derived from

Continued on following page

REPORT L10539 B (Amd1)

Test specification

The luminaire was installed in a false suspended ceiling, the ceiling being made of 12 mm thick porous wood fibre board. The fire hood was placed over the top of the luminaire, so as to position the luminaire centrally within the fire hood. The edges of the fire hood were sealed down onto the false ceiling and a recess box was constructed, using 19 mm thick laminated wood, around the fire hood touching on all sides. The recess box was then covered in fibre-glass loft insulation 200 mm thick.



Dimensions of test box:-

A = 180 mm

B = 300 mm

C = 80 mm

Positions marked 1 – 6 are the locations of the thermocouples used on the fitting

1 = Insulation 10 mm from lampholder terminal

2 = Side of fire hood (50 mm from base)

3 = Side of fire hood (80 mm from base)

4 = NOT USED

5 = Mounting surface (rear of recess box)

6 = Mounting surface (under rim of luminaire)

Continued on following page

REPORT L10539 B (Amd1)

Test specification (continued)

The testing was conducted in a draught proof enclosure as detailed in Annex D of BS EN 60598-1:2008, the luminaire was fitted with a 50W 12V Dichroic lamp operated at 1.05 times the lamps rated wattage (52.5W).

The luminaire was allowed to reach thermal stability – i.e temperature change <1°C per hour - prior to recording the temperatures measured below.

Results

All thermal results are referenced to an ambient of 25°C as required by the standard

The following results were recorded:-

Position	Recorded result	Referenced to 25°C ambient	Temperature limit*
0 (ambient)	25.3	25.0	--
1	148.0	147.7	200
2	65.6	65.3	90
3	58.8	58.5	90
5	93.8	93.5	90
6	85.8	85.5	90

* temperature limits have either been taken from table 12.2 of BS EN 60598-1:2008 or have been specified by the client

The result highlighted in blue is an over temperature to the limit given in BS EN 60598-1:2008 (tables 12.1 and 12.2) however, the standard does give a 5°C tolerance for errors and uncertainties.

Conclusion

Due to the recorded temperatures the fire hood/recessed luminaire/lamp combination are deemed to comply with the requirements of the test specification with regards to BS EN 60598-1:2008.

Continued on following page

REPORT L10539 B (Amd1)

Illustrations



End